

# Jumbo Ringlight



Annular ringlight Jumbo 66 mm

## Features

- Continuous ring of illumination fiber within the housing.
- Active diameter of the bundle is using the entire focal diameter of the 250 watt halogen bulb.
- Mounts directly to 66 mm objective by means of thumb screw.
- Housing made of rugged, black anodized aluminum.
- Fiber bundle protected with flexible metal PVC sheathing.

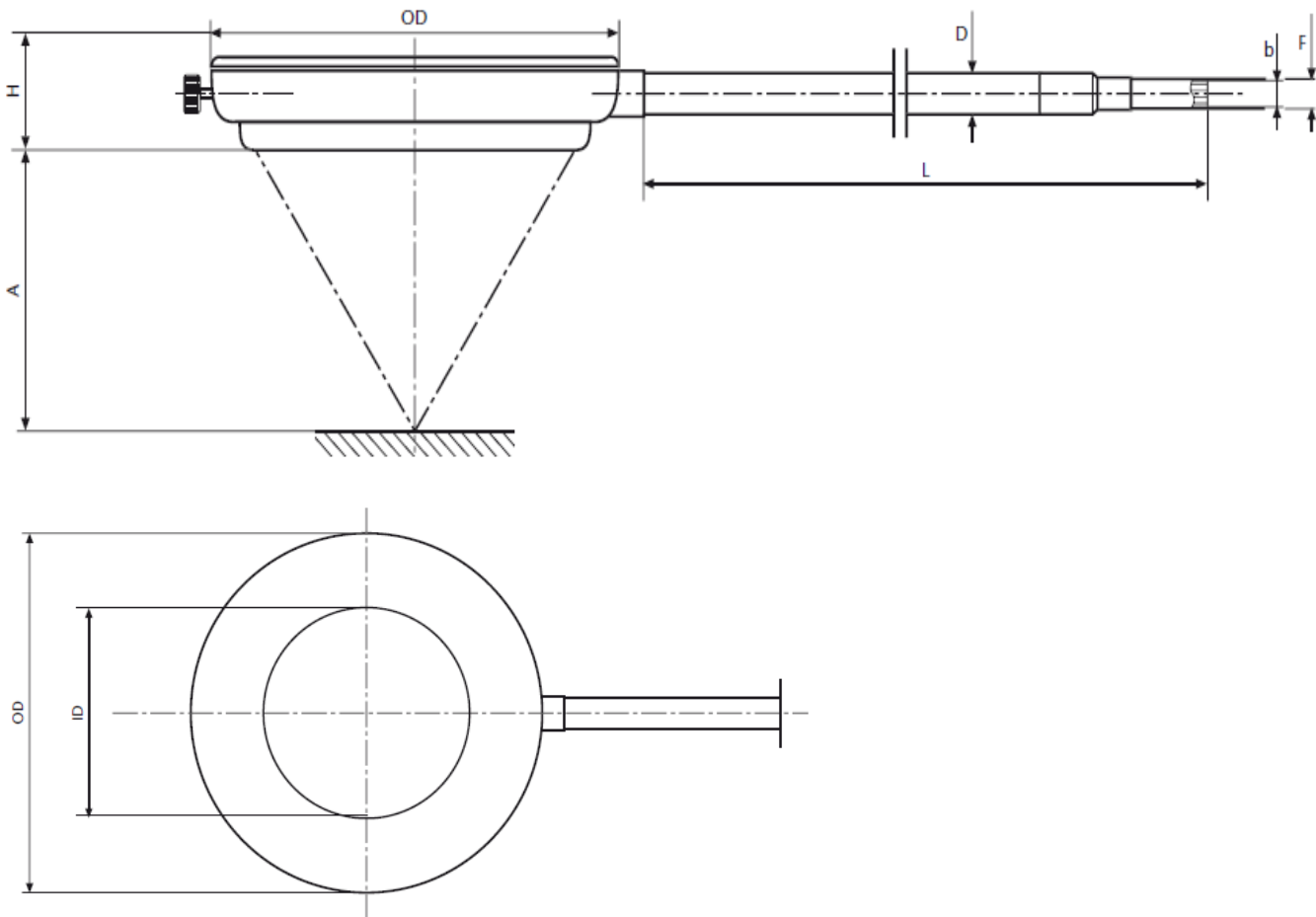
## Benefits

- Absolute shadow-free illumination for large area targets (i.e. SMD).
- The Jumbo ringlight in connection with the KL 2500 LCD delivers 300% more light as the standard ringlight with KL 1500 LCD.
- Large area fluorescence illumination.

Cold light source	Part No.	Type	Length	Inner Ø	Outer Ø	Height	Minimum working distance*	Active Ø branch	Outer Ø Jacketing	Light source adapter Ø
			(L)	(ID)	(OD)	(H)	(A)	(b)	(D)	(F)
KL 2500 LCD only	257 420	Slit 66 mm Ø	1000 mm 43.48"	66 mm 2.60"	120 mm 4.72"	36 mm 1.44"	25 mm 0.98"	12 mm 0.47"	20 mm 0.80"	17 mm 0.67"

\* Ringlight usable in any working distance above given minimum values.

# Jumbo Ringlight



All specifications are subject to change without prior notice. This datasheet or any extracts thereof may only be used in other publications with express permission of SCHOTT. © SCHOTT AG

**SCHOTT**  
**Authorised Distributor**  
Silicon Connection Pte Ltd  
Blk 7 Kallang Place  
#05-01/05/07/11/12  
Singapore 339153  
Phone: +65 81861235  
steven@si-cnx.com  
[www.si-cnx.com/products/lighting-imaging/](http://www.si-cnx.com/products/lighting-imaging/)

**SCHOTT**  
glass made of ideas