

Gooseneck Light Guides



Gooseneck light guide



Gooseneck light guide bifurcated



Combi light guide bifurcated

Features

- Flex and stay light guides.
- Part No. 170.402 with additional 800 mm flexible arm
- Black lacquered semi-rigid gooseneck tubing.
- Focusing optics with color filter option available.

Benefits

- Precise positioning offers complete control of light placement.
- Gooseneck branches positioned in opposite directions create near shadow-free illumination.
- Re-adjust with ease.
- Dual models illuminate workspace with a single light source.
- Part No. 170.402 can be stationary fixed at the microscope post

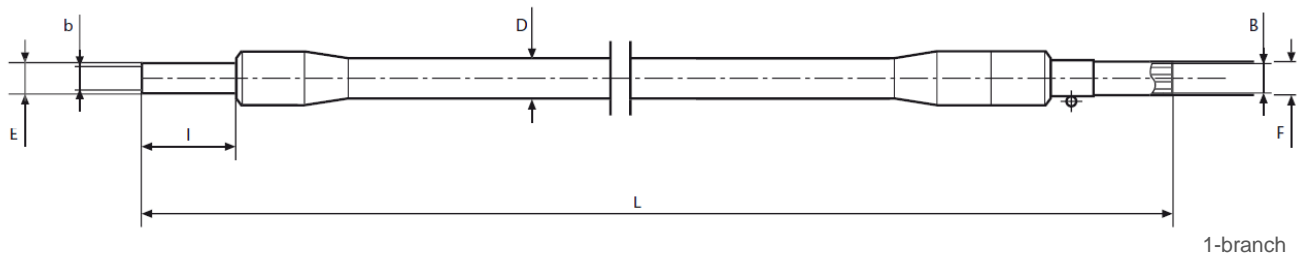
| Cold light source | Part No. | Type | Length | End tip Ø | End tip length | Active Ø branch | Active Common end Ø | Jacketing material | Outer Ø Jacketing | Light source adapter Ø |
|--|----------|--------------------------------|---|---------------|----------------|-----------------|--|------------------------------|---|---|
| | | | (L) | (E) | (I) | (b) | (B) | | (D) | (F) |
| KL 300 LED | 170 101 | 1 branch | 500 mm 19.69" | 6 mm 0.24" | 20 mm 0.79" | 3.5 mm 0.14" | 5 mm 0.20" | Flex & Stay | 11 mm 0.43" | 9 mm 0.35" |
| | 170 202 | 2 branch | 500 mm 19.69" | 6 mm 0.24" | 20 mm 0.79" | 3.5 mm 0.14" | 5 mm 0.20" | Flex & Stay | 11 mm 0.43" | 9 mm 0.35" |
| KL 1600 LED KL 2500 LED KL 1500 HAL KL 2500 LCD** | 154 101 | 1 branch | 600 mm 23.62" | 6 mm 0.24" | 20 mm 0.79" | 4.5 mm 0.18" | 4.5 mm 0.18" | Flex & Stay | 11 mm 0.43" | 10 mm 0.39" |
| | 154 202 | 2 branch | 600 mm 23.62" | 6 mm 0.24" | 20 mm 0.79" | 4.5 mm 0.18" | 6.4 mm 0.26" | Flex & Stay | 11 mm 0.43" | 10 mm 0.39" |
| | 154 302 | 3 branch | 600 mm 23.62" | 6 mm 0.24" | 20 mm 0.79" | 4.5 mm 0.18" | 7.8 mm 0.31" | Flex & Stay | 11 mm 0.43" | 10 mm 0.39" |
| KL 300 LED KL 1600 LED KL 2500 LED KL 1500 HAL KL 2500 LCD** | 170402 | 2 branch plus 1 flexible | (L) 500 mm 19.69" (L*) 800 mm 31.50" | 6 mm 0.24" | 20 mm 0.79" | 4.5 mm 0.18" | 6.4 mm 0.26" randomized | Flex & Stay plus M-PVC | (D) 11 mm 0.43" (D*) 14 mm 0.55" | 9 mm 0.35" and 10 mm 0.39" |

** and discontinued KL 1500 products (KL 1500 compact, KL 1500 LCD, KL 1500 LED, KL 1500 LED Plus)

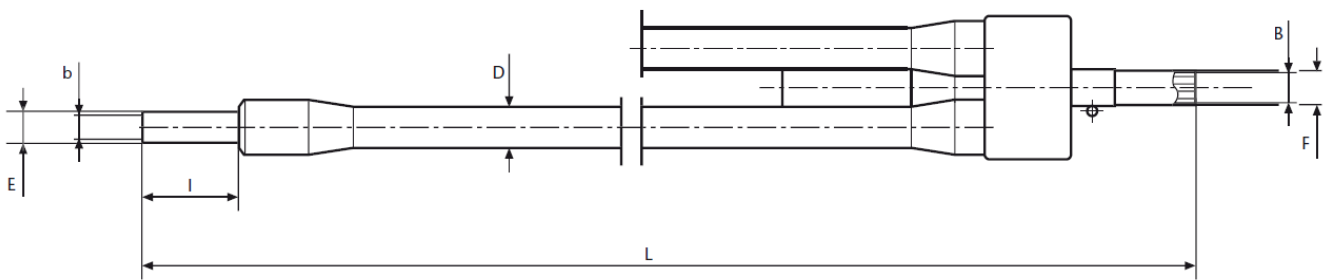
Version 05.2015



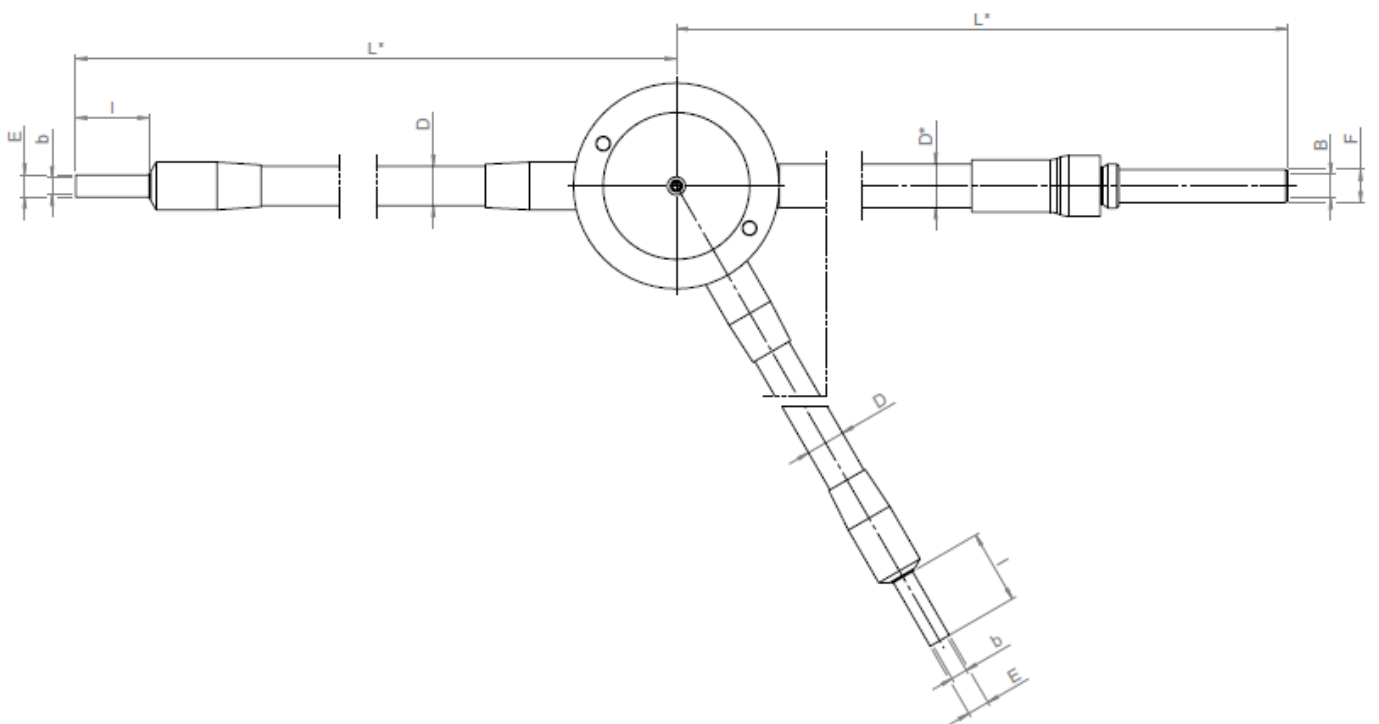
Gooseneck Light Guides



1-branch



2- and 3-branch



2-branch Combi light guide

All specifications are subject to change without prior notice. This datasheet or any extracts thereof may only be used in other publications with express permission of SCHOTT. © SCHOTT AG

SCHOTT
Authorised Distributor
 Silicon Connection Pte Ltd
 Blk 7 Kallang Place
 #05-01/05/07/11/12
 Singapore 339153
 Phone: +65 81861235
 steven@si-cnx.com
www.si-cnx.com/products/lighting-imaging/

