

# Flexible Light Guides

2- and 3-branch



Flexible light guide 2 branch



Flexible light guide 3 branch

## Features

- Flexible light guides are available in different lengths and diameters.
- Articulating arm and different holders for positioning available.
- Focusing lenses, color filters and polarizers available.

## Benefit

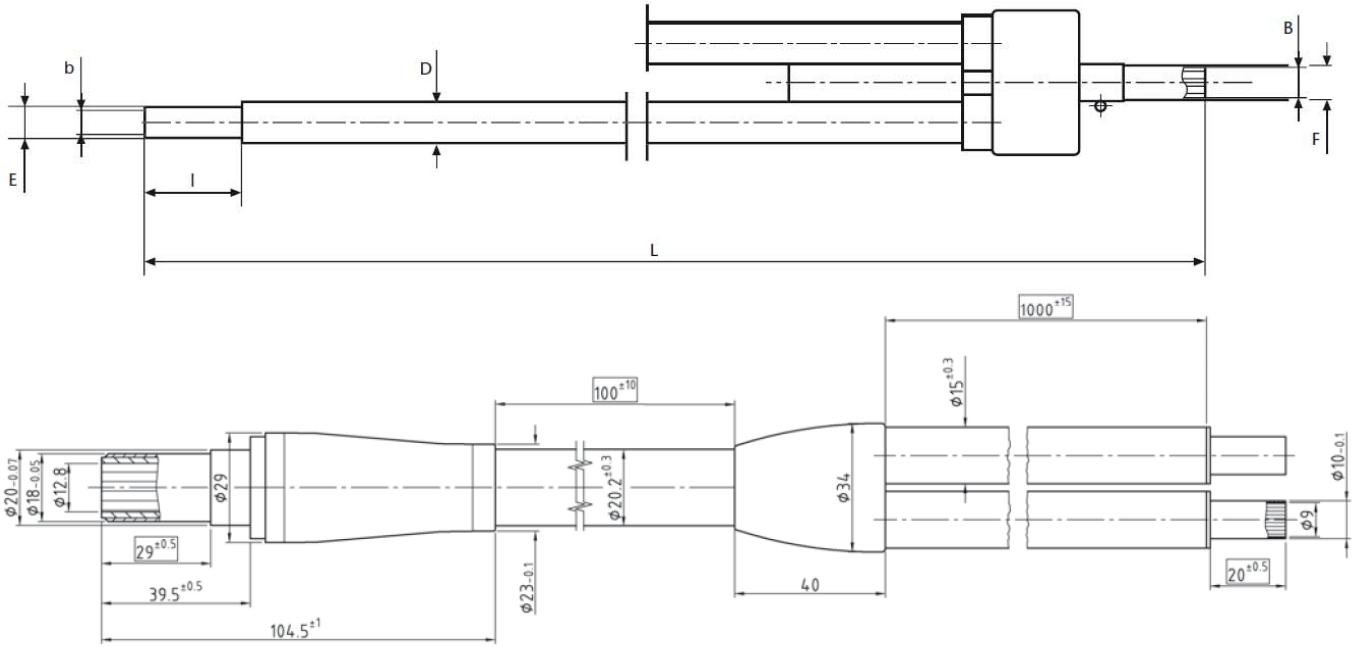
- High flexibility for different illuminations as well as remote illumination.

Cold light source	Part No.	Type	Length	End tip Ø	End tip length	Active Ø branch	Active Common end Ø	Jacketing material	Outer Ø Jacketing	Light source adapter Ø
			(L)	(E)	(l)	(b)	(B)		(D)	
KL 300 LED	171 202	2 branch	1000 mm 39.37"	6 mm 0.24"	20 mm 0.79"	4,5 mm 0.16"	6,4 mm 0.22"	Megolon	6,5 mm 0.26"	9 mm 0.35"
KL 1500 HAL KL 1600 LED KL 2500 LED KL 2500 LCD**	155 204	2 branch	1000 mm 39.37"	6 mm 0.24"	20 mm 0.79"	4.5 mm 0.18"	6.4 mm 0.25 "	M-PVC	9.8 mm 0.39"	10 mm 0.39"
	155 205	2 branch	1600 mm 62.99"	6 mm 0.24"	20 mm 0.79"	4.5 mm 0.18"	6.4 mm 0.25"	M-PVC	9.8 mm 0.39"	10 mm 0.39"
	155 206	3 branch	1000 mm 39.37"	6 mm 0.24"	20 mm 0.79"	4.5 mm 0.18"	7.8 mm 0.31"	M-PVC	9.8 mm 0.39"	10 mm 0.39"
KL 2500 LCD	255 204	2 branch randomized	1000 mm 39.37"	10 mm 0.40"	20 mm 0.79"	9 mm 0.36"	12.8 mm 0.51"	M-PVC	15.0 mm 0.60"	18 mm 0.71"

\*\* and discontinued KL 1500 products (KL 1500 compact, KL 1500 LCD, KL 1500 LED, KL 1500 LED Plus)



# Flexible Light Guides 2- and 3-branch



All specifications are subject to change without prior notice. This datasheet or any extracts thereof may only be used in other publications with express permission of SCHOTT. © SCHOTT AG

**SCHOTT**  
**Authorised Distributor**  
 Silicon Connection Pte Ltd  
 Blk 7 Kallang Place  
 #05-01/05/07/11/12  
 Singapore 339153  
 Phone: +65 81861235  
 steven@si-cnx.com  
[www.si-cnx.com/products/lighting-imaging/](http://www.si-cnx.com/products/lighting-imaging/)

