

The EasyLED series integrates advanced LED illumination and control functions into a single compact device. It is the ideal standard illumination system for routine examinations, research, and education applications.



Spot illumination

The EasyLED Spotlight and the EasyLED Double Spotlight Plus are an ingenious design that allows mounting to any microscope stand.

The intensity control is ergonomically located near the microscope focus knob. The robust metal lighthouse emits up to 130 lm of cool light and rated lifetime is 50,000 hours minimum.



Transmitted illumination

The EasyLED Transmitted Light Stage features a SCHOTT Opalika® surface that offers homogeneous and shadow free illumination.

Its robust metal housing and a functional design, delivers up to 12,000 cd/m² and a long life time of at least 50,000 hours.

SCHOTT Authorised Distributor
Lighting and Imaging Products
Silicon Connection Pte Ltd
Blk 7 Kallang Place
#05-01/05/07/11/12
Singapore 339153
Phone +65 81861235
steven@si-cnx.com
www.si-cnx.com/products/lighting-imaging/

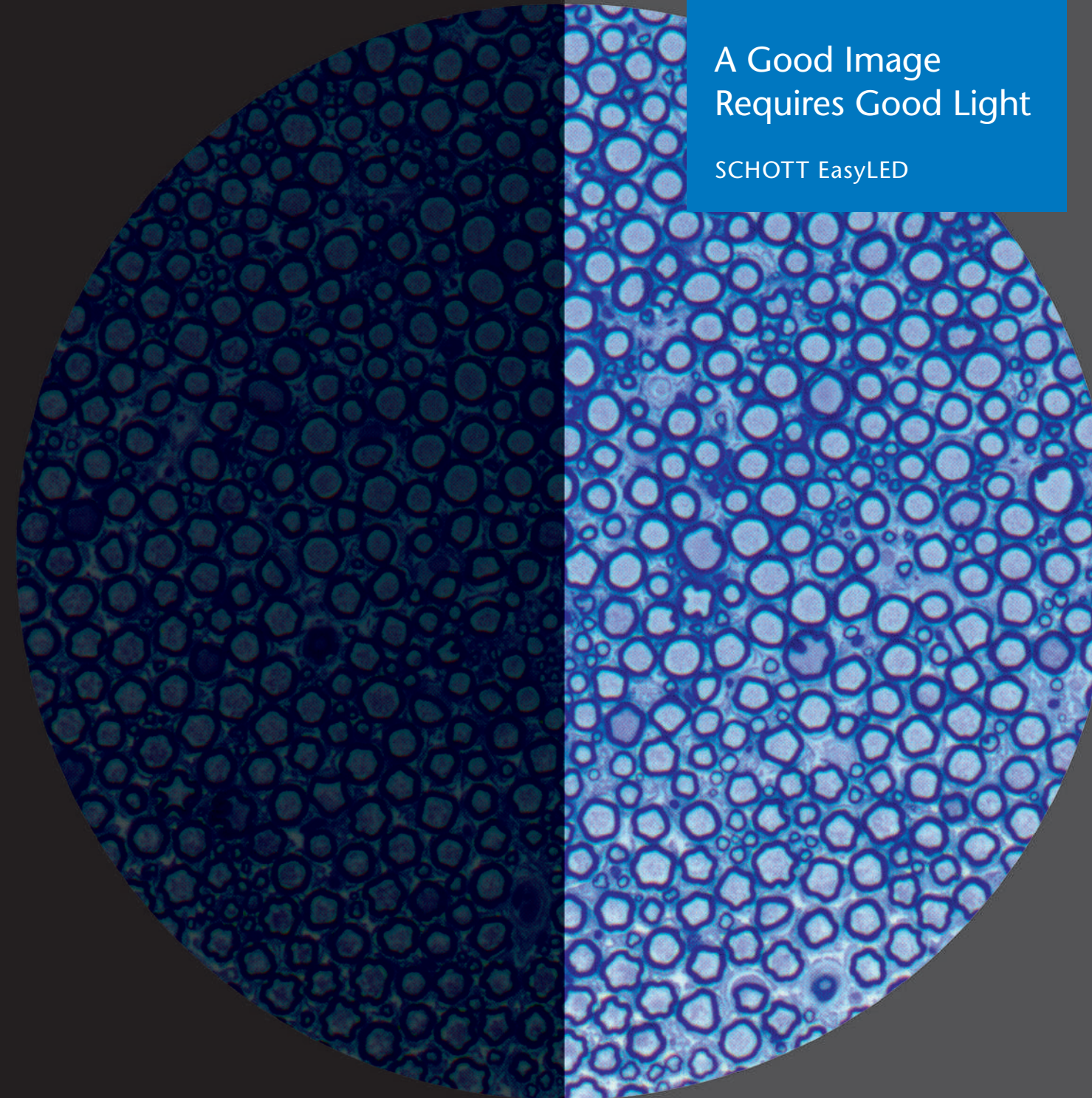


30074 ENGLISCH 09/2019 Ali/odd Printed in Germany

SCHOTT
glass made of ideas

A Good Image
Requires Good Light

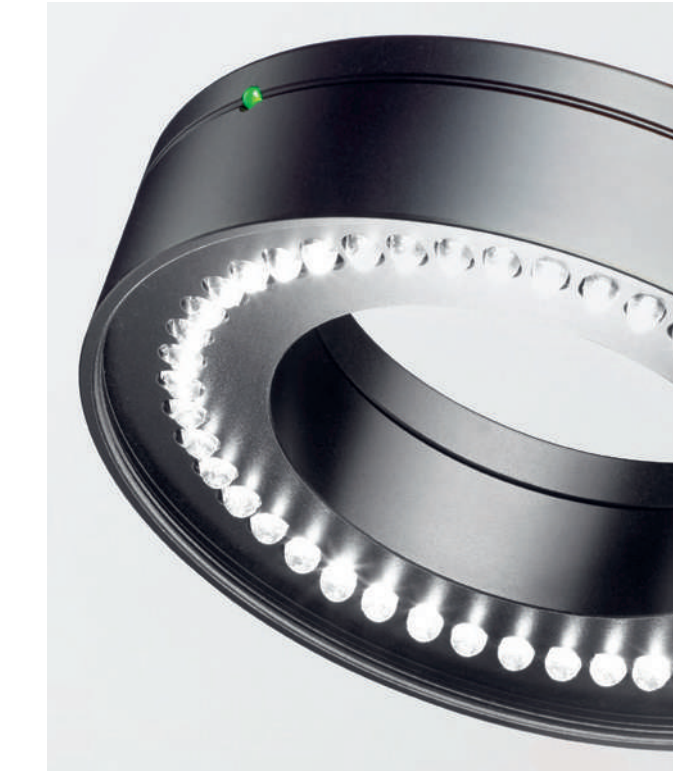
SCHOTT EasyLED



A good image requires good light

SCHOTT EasyLED illumination system

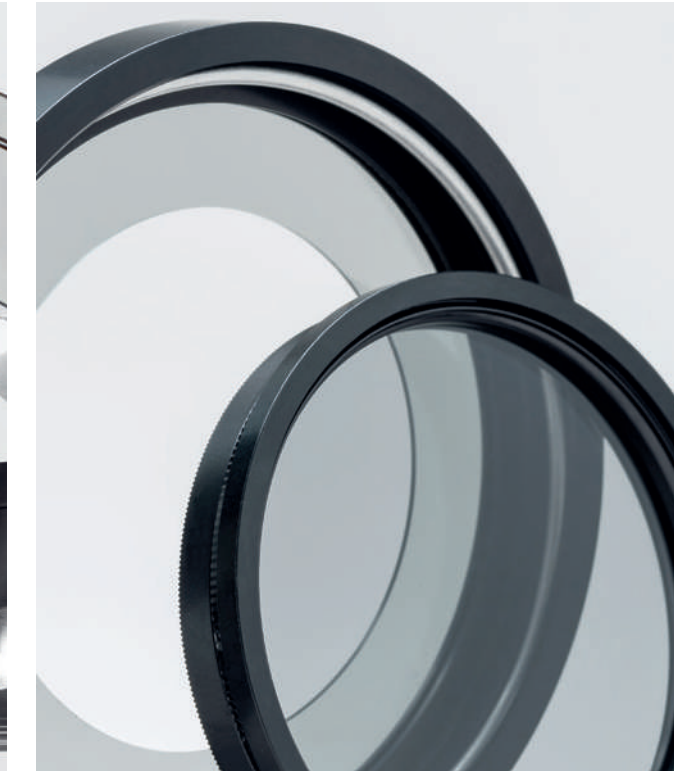
Optimal illumination of objects under examination is one of the most decisive factors for good results in stereo-microscopy. Ideal light is necessary for detection of hidden details, differentiation of specific areas and emphasis of special characteristics.



Ring illumination

The EasyLED Ringlight enables homogeneous and shadowless illumination with a maximum brightness of 90 kLux and a long life of at least 50,000 hours. It features a robust metal housing and a highly functional design.

The powerful 140 kLux EasyLED Ringlight Plus has additional controllable segments that enable new contrast methods. The integrated control element allows easy and intuitive switching between the different illumination modes, as well as a rotation function in both directions.

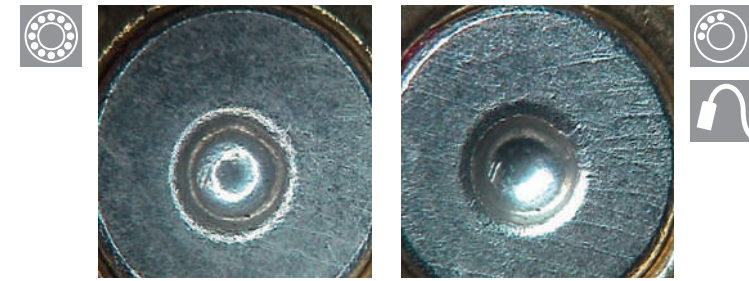


Accessories

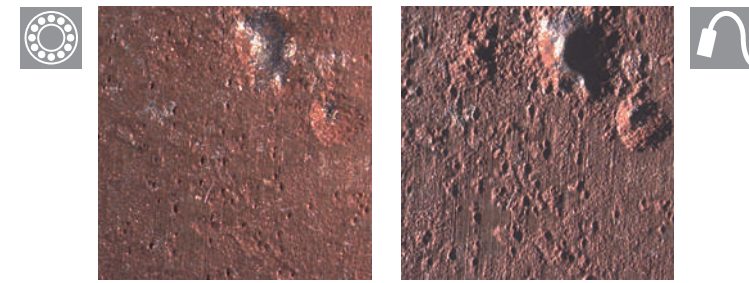
We offer suitable accessories for the EasyLED Ringlight Plus for the reduction of disturbing surface reflections.

The ringlight diffuser enables homogenization and diffusion of the light, which significantly reduces surface reflections. The Polarizer Set, which consists of a rotating polarizer in front of the LEDs and an analyzer in the observation ray path, makes it possible not only to eliminate reflections, but also to emphasise double-refracting materials.

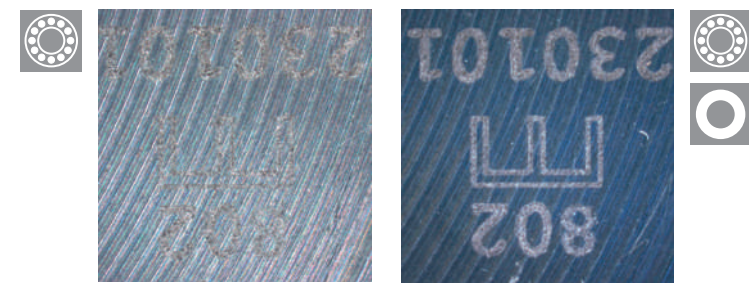
Caption title: Cross section through the sciatic nerve, illuminated with EasyLED Transmitted Light Stage.



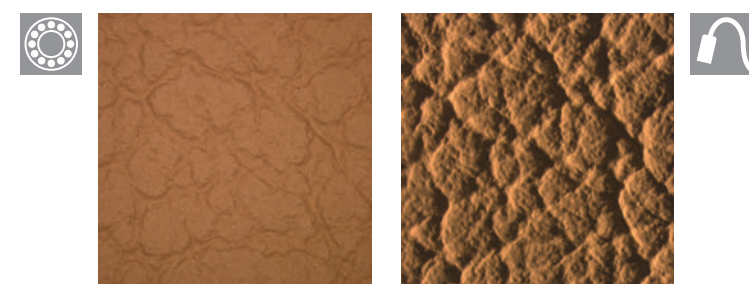
LED Ringlight
Segmentation LED Ringlight and oblique lighting



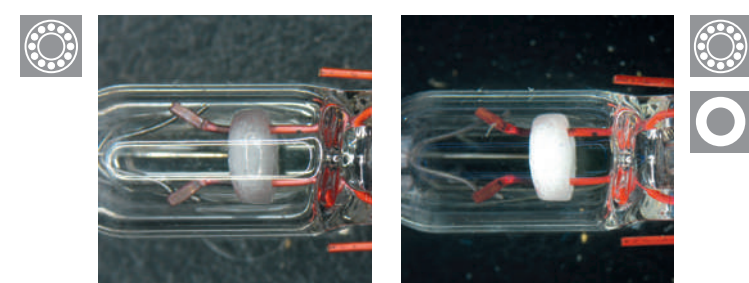
LED Ringlight
Oblique lighting



LED Ringlight
LED Ringlight and polarization



LED Ringlight
Oblique lighting



LED Ringlight
LED Ringlight and polarization

EasyLED Ringlight

P/N 600.200

- High intensity (90 kLux)
- 45 high-power LEDs
- Working distance 50-135 mm
- Integrated control
- Lifetime > 50,000 hours

EasyLED Ringlight Plus

P/N 600.300

- Highest intensity (140 kLux)
- 48 high-power LEDs
- Working distance 50-130 mm
- Integrated control
- Segmentable
- Lifetime > 50,000 hours

Accessories

- For EasyLED Ringlights
- To reduce surface reflections

Diffuser

P/N 400.570

Polarizer Set

P/N 400.550



EasyLED Ringlight

Accessories



EasyLED Double Spotlight Plus

EasyLED Transmitted Light Stage



EasyLED Double Spotlight Plus

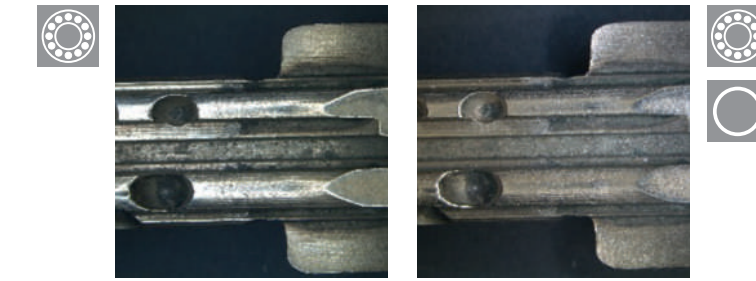
P/N 600.121

- Intensive 130 lm per lighthouse
- Lighthouses can be controlled individually
- Lifetime > 50,000 hours

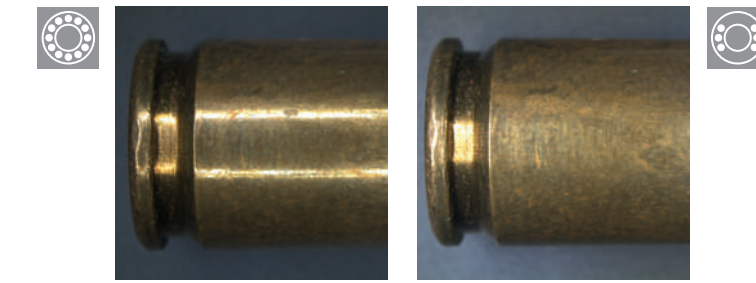
EasyLED Transmitted Light Stage

P/N 600.400

- High luminance of 12,000 cd/m²
- Integrated control
- Scratch-resistant surface
- Lifetime > 50,000 hours



LED Ringlight
LED Ringlight and diffuser



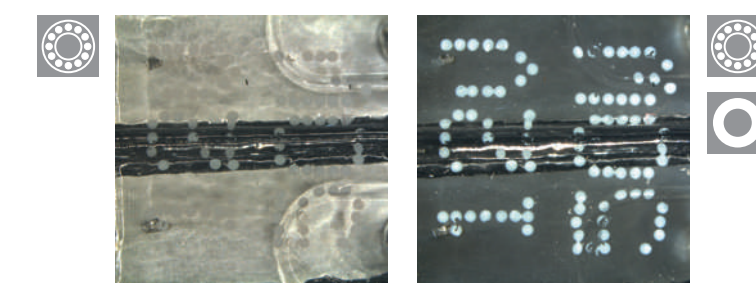
LED Ringlight
Segmentation LED Ringlight



Transmitted Light
Transmitted Light



Segmentation LED Ringlight
Segmentation LED Ringlight



LED Ringlight
LED Ringlight and polarization